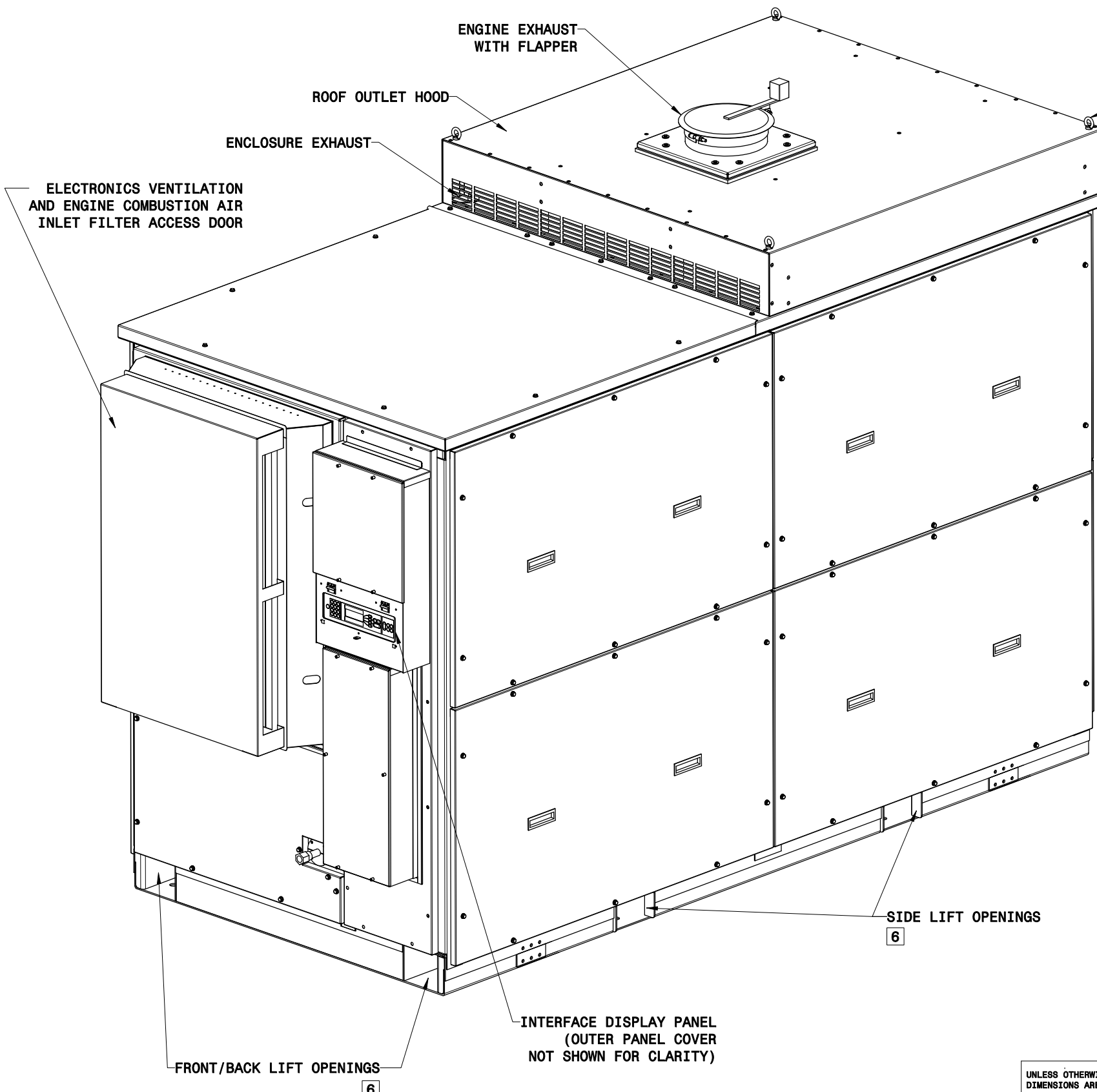


**NOTICE**

THIS DOCUMENT CONTAINS INFORMATION WHICH IS BOTH CONFIDENTIAL AND PROPRIETARY TO CAPSTONE TURBINE CORP. NEITHER THIS DOCUMENT NOR THE INFORMATION CONTAINED HEREIN SHALL BE COPIED, DISCLOSED TO OTHERS OR USED FOR ANY PURPOSES BEYOND THE SPECIFIC PURPOSE FOR WHICH THIS DOCUMENT WAS DELIVERED WITHOUT THE EXPRESS WRITTEN PERMISSION OF CAPSTONE TURBINE CORPORATION.  
1995 CAPSTONE TURBINE CORPORATION - ALL RIGHTS RESERVED

REVISIONS			
LTR	DESCRIPTION	DATE	APPROVED
E	SEE ECO 105284	07/01/2014	P.BREAULT

- NOTES**
- INTERPRET DRAWING PER ASME Y14.5M-1994.
  - ALL DIMENSIONS ARE IN INCHES [MILLIMETERS].
  - FRONT, SIDE AND REAR CLEARANCES SHOULD BE PROVIDED FOR ACCESS. LOCAL ELECTRICAL CODES SHALL PRESCRIBE MINIMAL REAR CLEARANCE FOR ACCESS TO JUNCTION BOX.
  - MOUNT LEVEL WITHIN 2% GRADE. SURFACE MUST DRAIN PREVENT STANDING WATER.
  - REFER TO PRODUCT CATALOG FOR OPTIONAL ACCESSORIES.
  - FORKLIFT, SPREADER BARS, PALLET JACK ETC., MAY BE USED FOR LIFTING THE UNIT FROM EITHER THE SIDE OR FRONT/BACK LIFT ARRANGEMENT. THE SYSTEM ENCLOSURE CAN BE FORK LIFTED FROM ANY SIDE WHILE COMPLETELY EMPTY OR COMPLETELY FULL. OTHERWISE, MUST BE LIFTED FROM THE HEAVY END ONLY.
  - ALL DIMENSIONS ARE NOMINAL AND ARE TO BE USED AS REFERENCE FOR BUILDING PURPOSES ONLY, UNLESS OTHERWISE SPECIFIED ON BUILDING.
  - ROOF IS "NO STEP" ZONE.
  - EYE BOLTS ARE NOT TO BE USED TO LIFT THE UNIT. EYE BOLTS ARE USED TO REMOVE ROOF ONLY.
  - REFER TO CAPSTONE TURBINE FUEL TECHNICAL REFERENCE MANUAL 410002.
  - ADDITIONAL MICROTURBINE PRODUCT SPECIFICATION INFORMATION IS CONTAINED IN THE C200 PRODUCT SPECIFICATION 480045D.
  - ADDITIONAL MICROTURBINE INFORMATION IS CONTAINED IN THE C200 TECHNICAL REFERENCE 410066C.
  - ADDITIONAL SERVICE CLEARANCE MAY BE REQUIRED FOR ENGINE REPLACEMENT AT OVERHAUL. ADDITIONAL SPACE MUST BE CONSIDERED DURING SPACE PLANNING PHASE OF PROJECT.



9  
4X M10 EYE BOLT TO LIFT ROOF OUTLET HOOD ONLY

WEIGHTS			
HPNG/LPG/A/B	DM	7525 LBS	3413 KG
HPNG/LPG/A/B	GC	6120 LBS	2776 KG
LPNG/LIQ	DM	8125 LBS	3685 KG
LPNG/LIQ	GC	6720 LBS	3048 KG

LUG SIZES/ELECTRICAL CONNECTIONS			
MCM-AWG WIRE SIZE	mm <sup>2</sup>	IN LBS TORQUE	Kg-M
500 - #4	300 - 21.1	500	5.77
NEUTRAL TO GROUND		30	0.34
#6 AWG - 13.3mm <sup>2</sup>			

FUELS	FUEL INLET	MODES	
		DM	GC
LPNG	2" [50.8] FEMALE NPT	X	X
HPNG	1" [25.4] FEMALE NPT	X	X
LIQUID	1" [25.4] FEMALE NPT	X	X
PROPANE	1" [25.4] FEMALE NPT	X	X
LANDFILL (TYPE A)	1" [25.4] FEMALE NPT		X
DIGESTER (TYPE B)	1" [25.4] FEMALE NPT		X

UNLESS OTHERWISE SPECIFIED DIMENSIONS ARE IN INCHES TOLERANCES ARE:

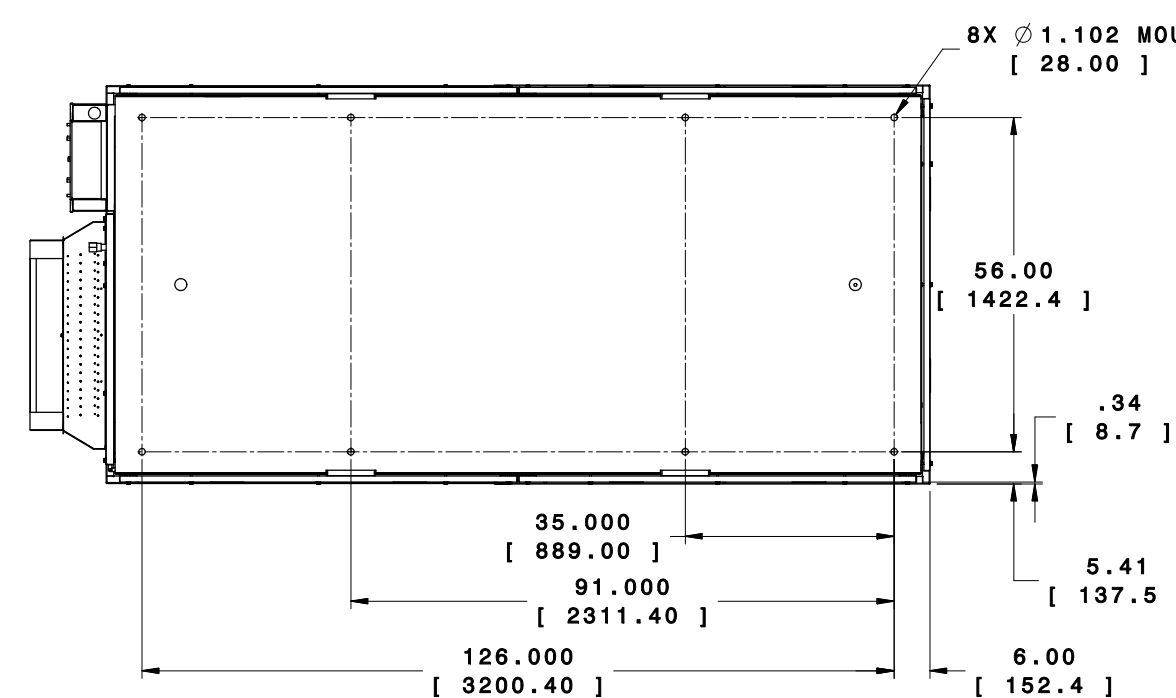
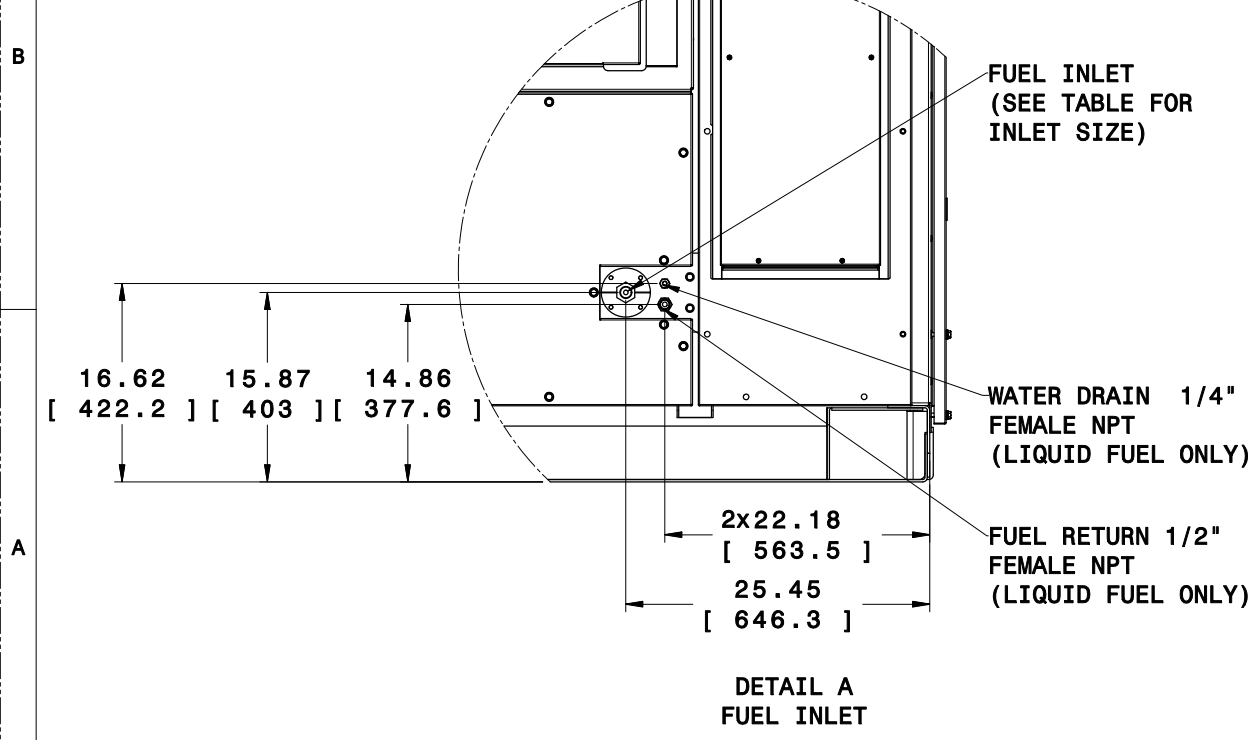
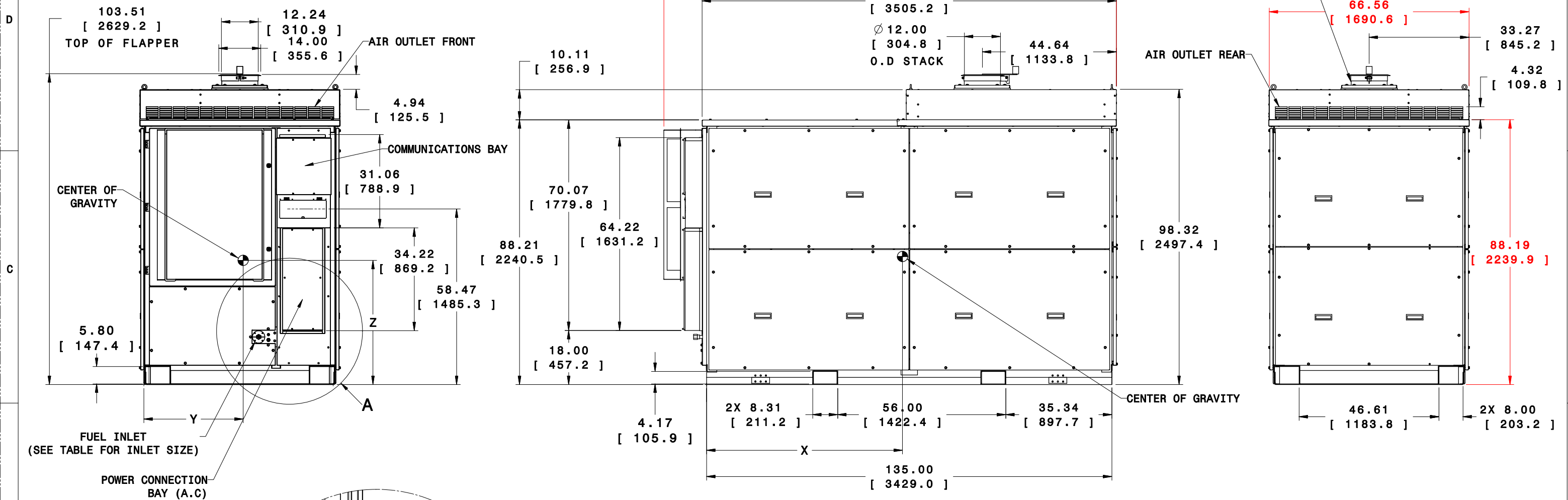
DECIMALS	ANGLES
.XX ±.03	±.5°
.XXX ±.010	

DO NOT SCALE DRAWING

APPROVALS	DATE	Capstone Turbine Corporation 21251 HODGROFF STREET CHATSWORTH, CA 91311
DFTS P. BREAULT	06/30/2014	
CHKR P. BREAULT	06/30/2014	
ENR MOR G. TERZER	06/30/2014	
ODS ENR P. BREAULT	06/30/2014	
MAT ENR -	-	
TITLE		O&I, C200 MICROTURBINE
THIRD ANGLE PROJECTION	SIZE CASE CODE	DWG NO.
	D 1U1M9	523005-100
SCALE 1:1	DTR:10019944	VER:05 SHEET 1 OF 6

COPY IS UNCONTROLLED; USER IS RESPONSIBLE TO VERIFY CURRENT REVISION

**NOTICE**  
 THIS DOCUMENT CONTAINS INFORMATION WHICH IS BOTH CONFIDENTIAL AND PROPRIETARY TO CAPSTONE TURBINE CORP. NEITHER THIS DOCUMENT NOR THE INFORMATION CONTAINED HEREIN SHALL BE COPIED, DISCLOSED TO OTHERS OR USED FOR ANY PURPOSES BEYOND THE SPECIFIC PURPOSE FOR WHICH THIS DOCUMENT WAS DELIVERED WITHOUT THE EXPRESS WRITTEN PERMISSION OF CAPSTONE TURBINE CORPORATION.  
 1995 CAPSTONE TURBINE CORPORATION - ALL RIGHTS RESERVED

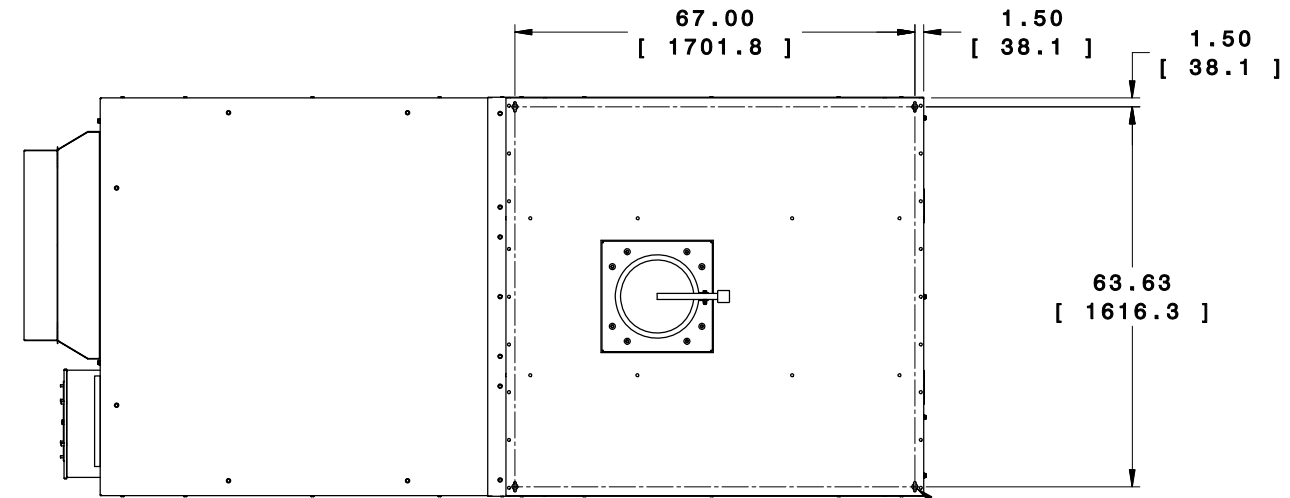


GRID CONNECT			
	X	Y	Z
LPNG/LIQ	74.00 [1880]	33.50 [851]	40.75 [1035]
HPNG/LPG/A/B	68.00 [1727]	38.50 [978]	46.75 [1187]

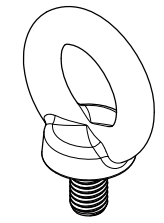
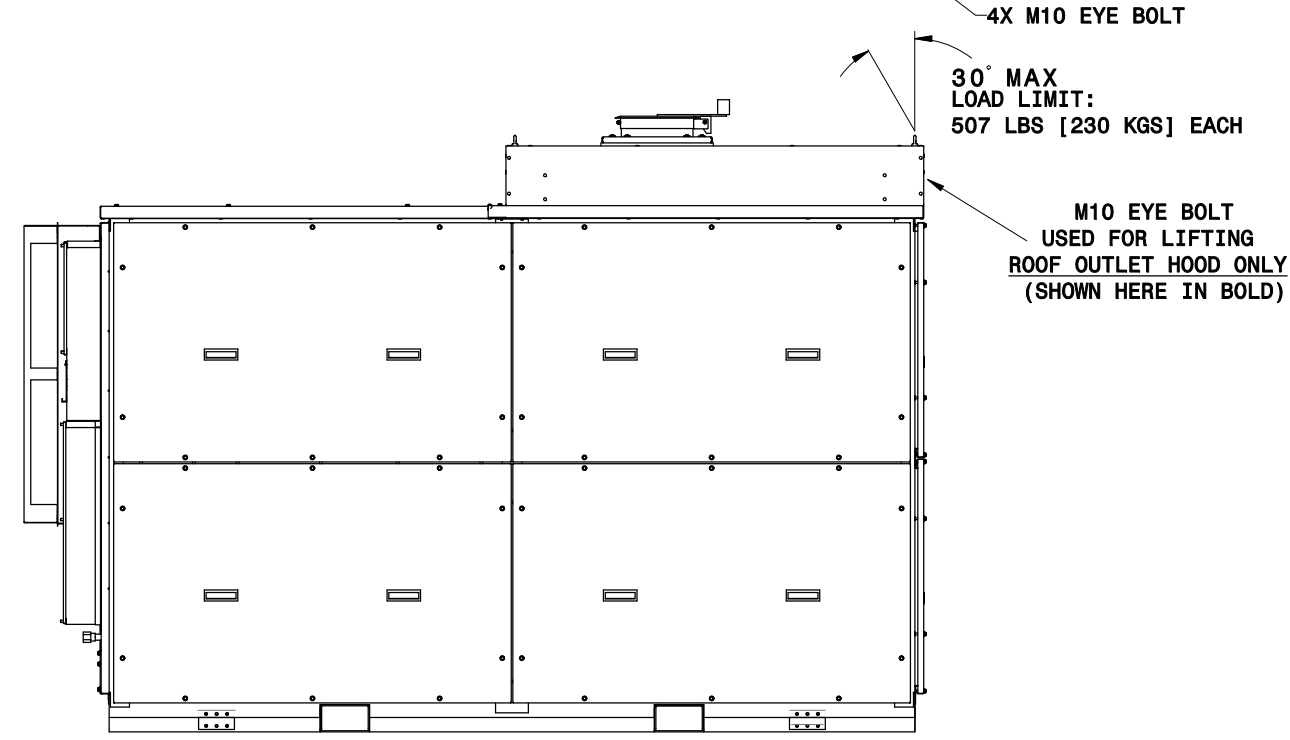
DUAL MODE			
	X	Y	Z
LPNG/LIQ	69.50 [1765]	27.75 [705]	35.50 [902]
HPNG/LPG/A/B	63.50 [1613]	33.75 [857]	41.50 [1054]

COPY IS UNCONTROLLED; USER IS RESPONSIBLE TO VERIFY CURRENT REVISION

**NOTICE**  
 THIS DOCUMENT CONTAINS INFORMATION WHICH IS BOTH CONFIDENTIAL AND PROPRIETARY TO CAPSTONE TURBINE CORP. NEITHER THIS DOCUMENT NOR THE INFORMATION CONTAINED HEREIN SHALL BE COPIED, DISCLOSED TO OTHERS OR USED FOR ANY PURPOSES BEYOND THE SPECIFIC PURPOSE FOR WHICH THIS DOCUMENT WAS DELIVERED WITHOUT THE EXPRESS WRITTEN PERMISSION OF CAPSTONE TURBINE CORPORATION.  
 1995 CAPSTONE TURBINE CORPORATION - ALL RIGHTS RESERVED



**M10 EYE BOLT  
 USED FOR LIFTING ROOF OUTLET HOOD ONLY**

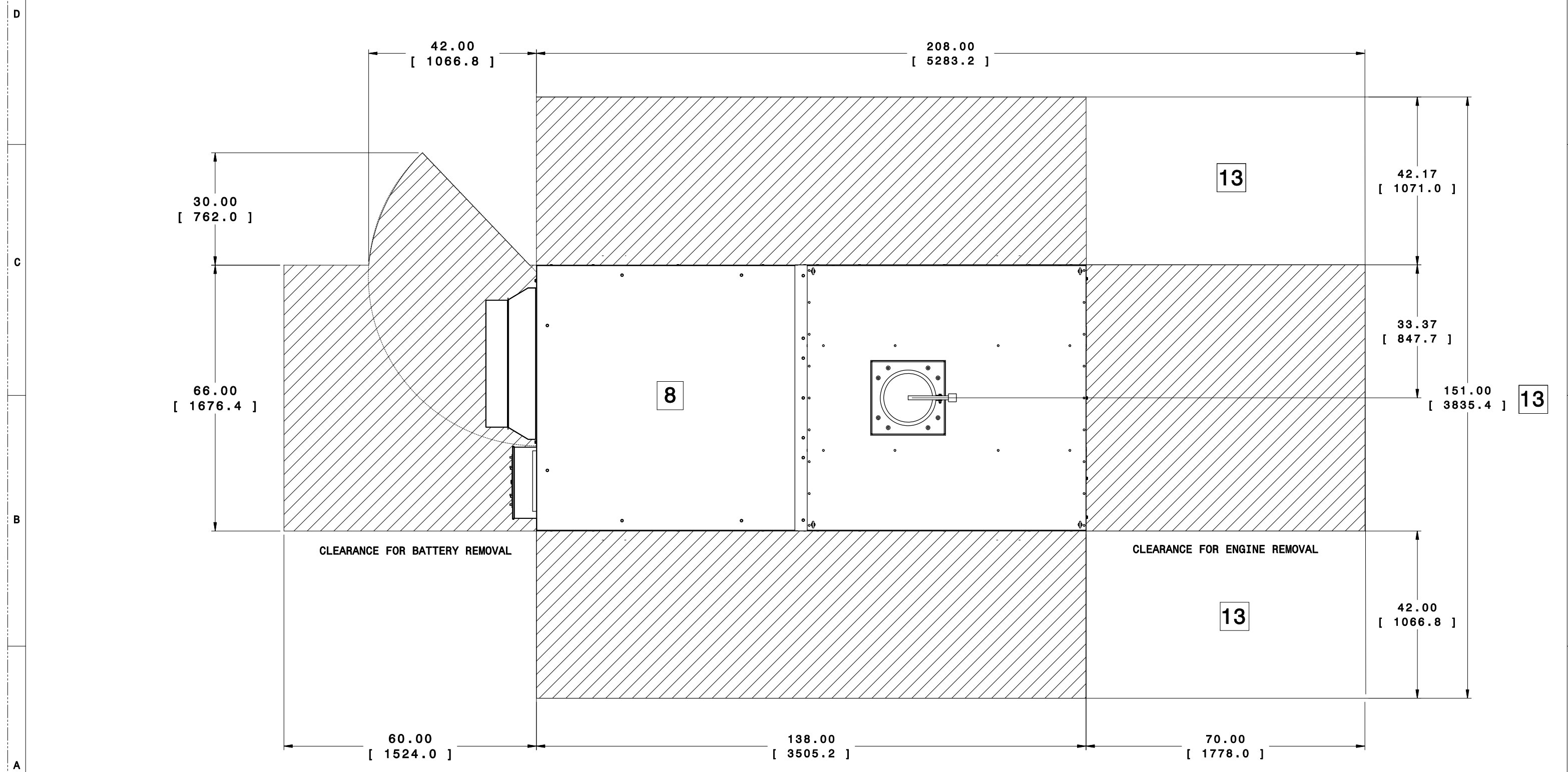


**3D VIEW**  
 FOR REFERENCE ONLY  
 SCALE: NONE

**NOTICE**

THIS DOCUMENT CONTAINS INFORMATION WHICH IS BOTH CONFIDENTIAL AND PROPRIETARY TO CAPSTONE TURBINE CORP. NEITHER THIS DOCUMENT NOR THE INFORMATION CONTAINED HEREIN SHALL BE COPIED, DISCLOSED TO OTHERS OR USED FOR ANY PURPOSES BEYOND THE SPECIFIC PURPOSE FOR WHICH THIS DOCUMENT WAS DELIVERED WITHOUT THE EXPRESS WRITTEN PERMISSION OF CAPSTONE TURBINE CORPORATION. 1995 CAPSTONE TURBINE CORPORATION - ALL RIGHTS RESERVED

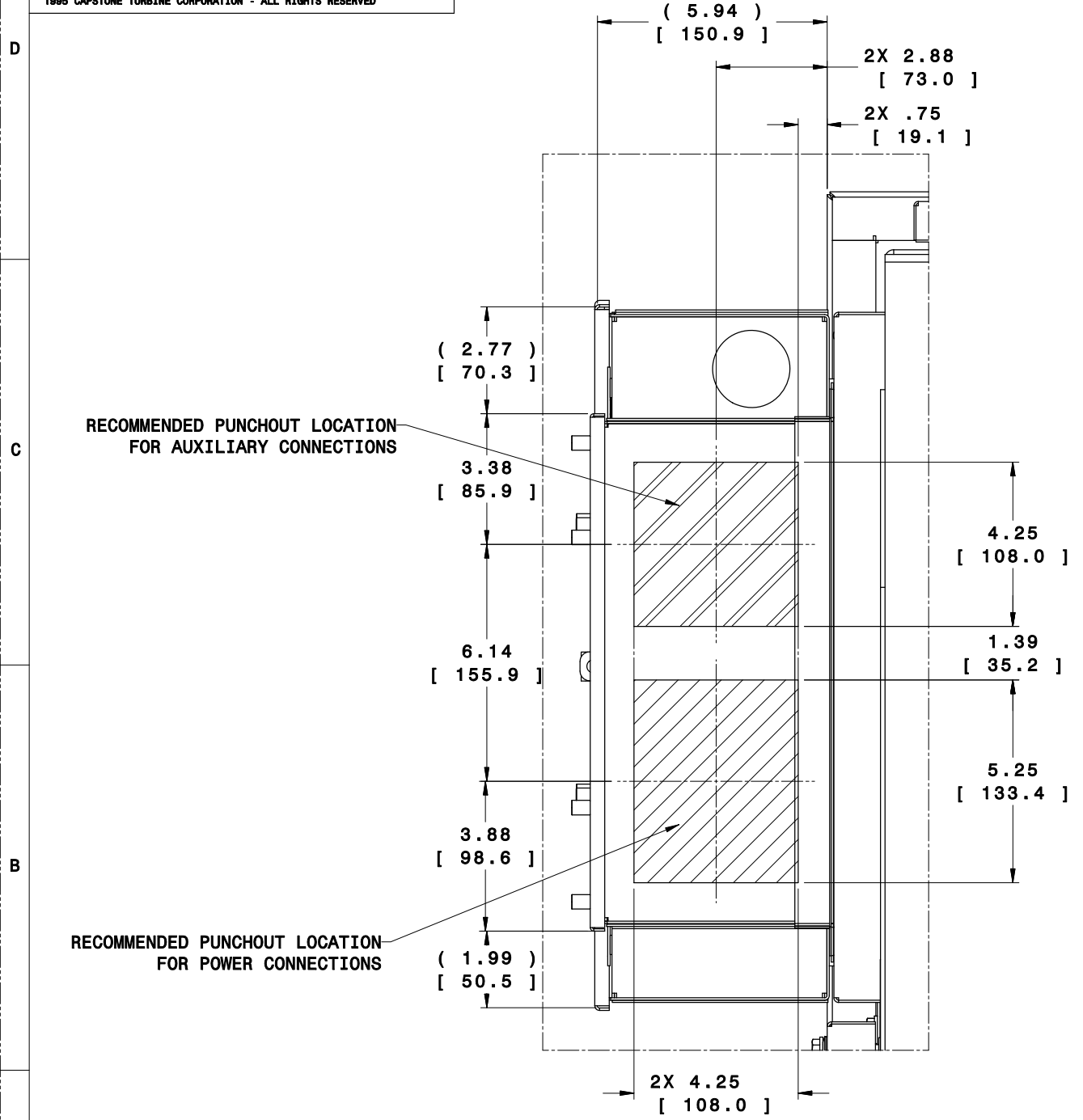
# SERVICES CLEARANCES REQUIRED 3



**NOTICE**  
 THIS DOCUMENT CONTAINS INFORMATION WHICH IS BOTH CONFIDENTIAL AND PROPRIETARY TO CAPSTONE TURBINE CORP. NEITHER THIS DOCUMENT NOR THE INFORMATION CONTAINED HEREIN SHALL BE COPIED, DISCLOSED TO OTHERS OR USED FOR ANY PURPOSES BEYOND THE SPECIFIC PURPOSE FOR WHICH THIS DOCUMENT WAS DELIVERED WITHOUT THE EXPRESS WRITTEN PERMISSION OF CAPSTONE TURBINE CORPORATION.  
 1995 CAPSTONE TURBINE CORPORATION - ALL RIGHTS RESERVED

**NOTE: RECOMMENDED PUNCHOUT LOCATIONS TO BE CREATED DURING THE FIELD INSTALLATION**

SEE SHEET 1 FOR REVISION INFORMATION



**BOTTOM VIEW \*  
 POWER CONNECTIONS BAY**

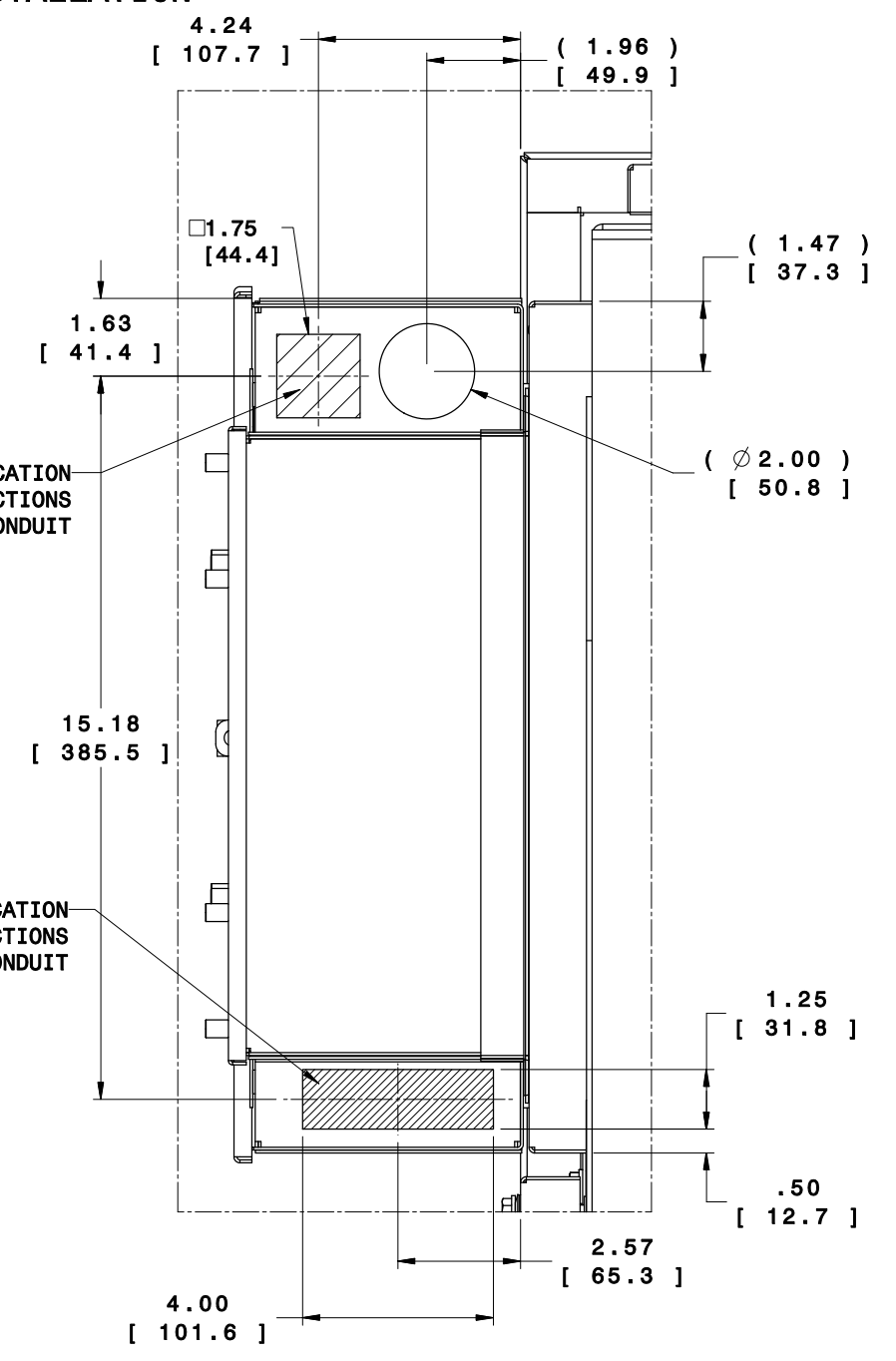
**POWER CONNECTIONS**

MAXIMUM CABLE SIZE : (1) 500MCM CABLE PER PHASE + NEUTRAL & GROUND

**AUXILIARY CONNECTIONS**

CABLE SIZE : (4) AWG GAUGE WIRE

\* CALCULATE WIDTH OF BOTTOM VIEW-POWER CONNECTIONS BAY AND BOTTOM VIEW-COMMUNICATIONS BAY BOXES WITH THE DIMENSIONS SHOWN ON PAGE 5 OF 6.



**BOTTOM VIEW \*  
 COMMUNICATIONS BAY**

**COMMUNICATION CONNECTIONS**

TO DMSC: (1X, 10-CONDUCTOR CABLE, 18AWG) IN ONE CONDUIT

TO HRM OR CHILLER: MT STATUS, MT RUN STATUS, DILUTE ON (3X, 2-CONDUCTOR CABLES, 18AWG) IN ONE CONDUIT

MULTI PACK CONNECTIONS: ETHERNET & RS485 (INTERCONNECTION KIT CABLES), MT STATUS AND MT RUN STATUS (2X, 2-CONDUCTOR CABLES, 18AWG) IN ONE CONDUIT

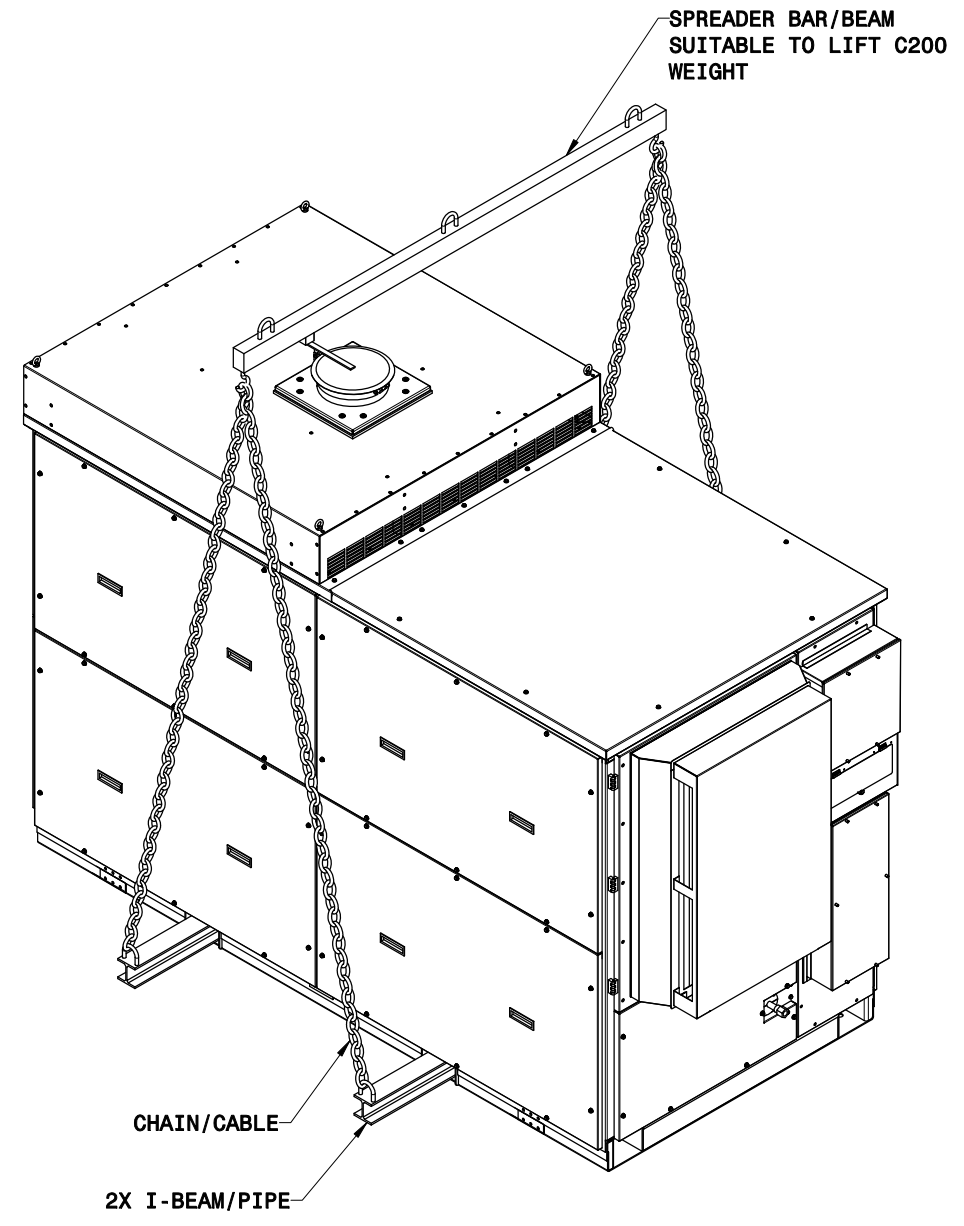
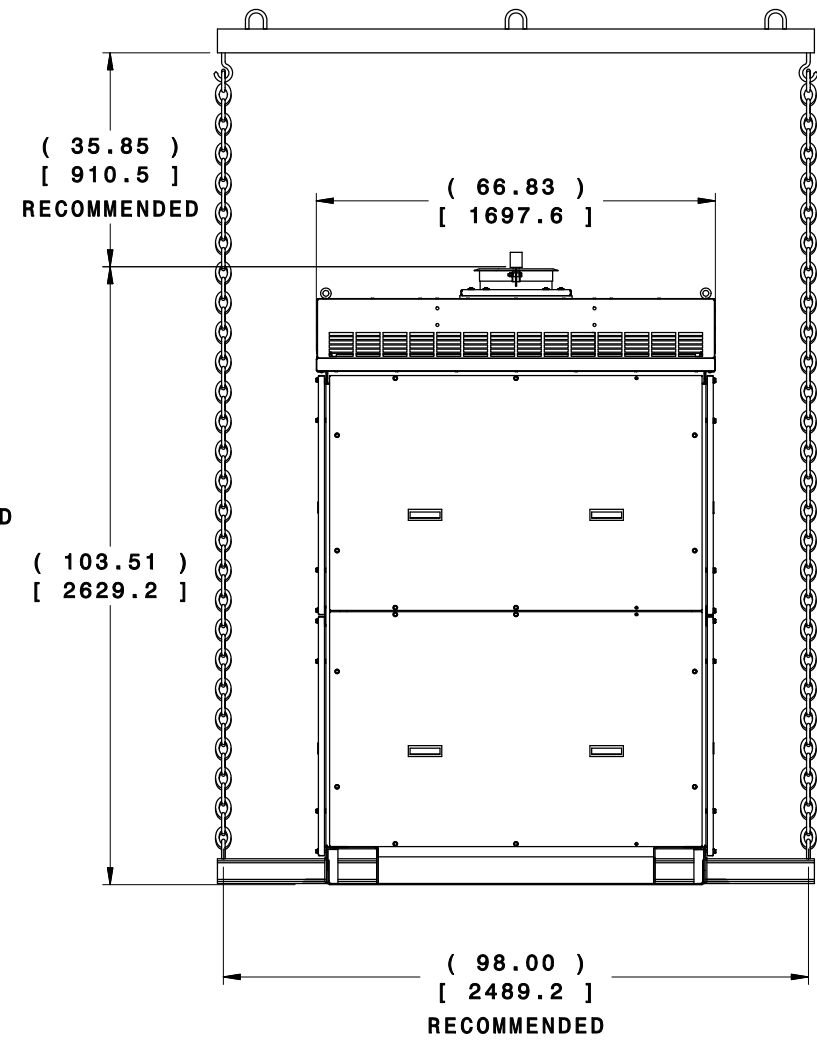
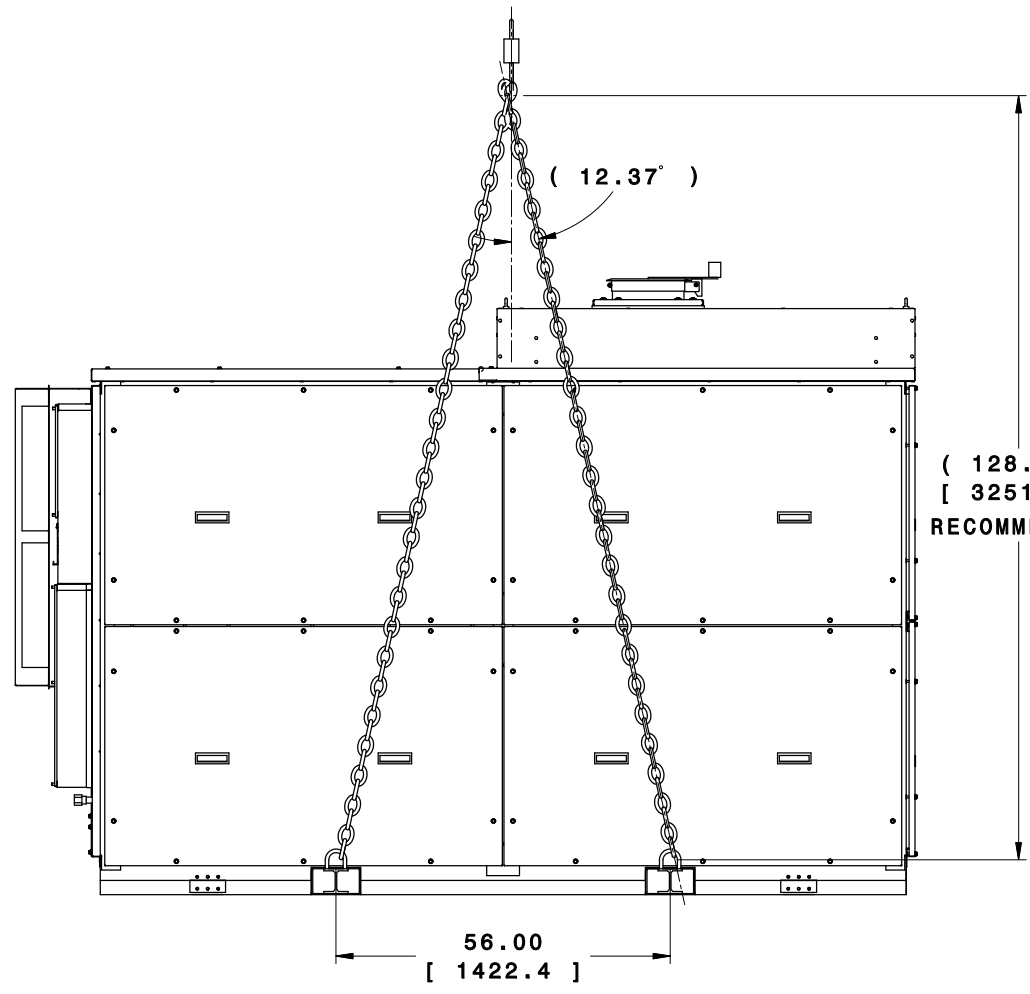
TO RMC: ETHERNET AND START/STOP (1X, CAT. 5E CABLE; 1X 2-CONDUCTOR CABLE, 18AWG) IN ONE CONDUIT

COPY IS UNCONTROLLED; USER IS RESPONSIBLE TO VERIFY CURRENT REVISION

**NOTICE**  
 THIS DOCUMENT CONTAINS INFORMATION WHICH IS BOTH CONFIDENTIAL AND PROPRIETARY TO CAPSTONE TURBINE CORP. NEITHER THIS DOCUMENT NOR THE INFORMATION CONTAINED HEREIN SHALL BE COPIED, DISCLOSED TO OTHERS OR USED FOR ANY PURPOSES BEYOND THE SPECIFIC PURPOSE FOR WHICH THIS DOCUMENT WAS DELIVERED WITHOUT THE EXPRESS WRITTEN PERMISSION OF CAPSTONE TURBINE CORPORATION. 1995 CAPSTONE TURBINE CORPORATION - ALL RIGHTS RESERVED

**LIFTING ARRANGEMENT USING SPREADER BAR/BEAM**

**PROPER RIGGING TO BE PROVIDED DURING LIFT FOR THE STABILITY OF THE UNIT.**



**DESIGN, CERTIFICATION AND SUPPLY OF THE SPREADER BAR/BEAM, I-BEAMS/PIPE AND CHAINS NOT BY CAPSTONE**